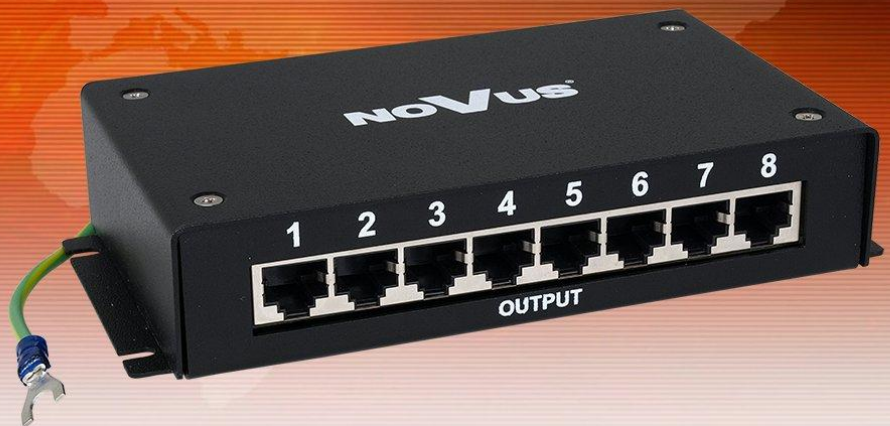


IP Surge Protector NVS-810E



Charakteristik

- o power supply needed

Parameter	Beschreibung
Device Type	8-channel passive surge protector used in UTP/STP network cable connections
Nominal voltage	$U_n = 5 \text{ V}$
Maximum voltage	$U_c = 6 \text{ V}$
Line-line voltage protection level	$U_n \leq 40 \text{ V} - 1 \text{ kV}/\mu\text{s}, \text{ C3}$
Line-ground voltage protection level	$U_p \leq 600 \text{ V} - 1 \text{ kV}/\mu\text{s}, \text{ C3}$
Nominal line-line discharge current	$i_n = 20 \text{ A } 10/1000 \mu\text{s}, \text{ C3}$
Nominal line-ground discharge current	$i_n = 20 \text{ A } 10/1000 \mu\text{s}, \text{ C3}$
Connector	8 x RJ-45 (input) 8 x RJ-45 (output)
Dimensionen (mm)	162 (W) x 90 (H) x 37 (L)
Gewicht	500 g